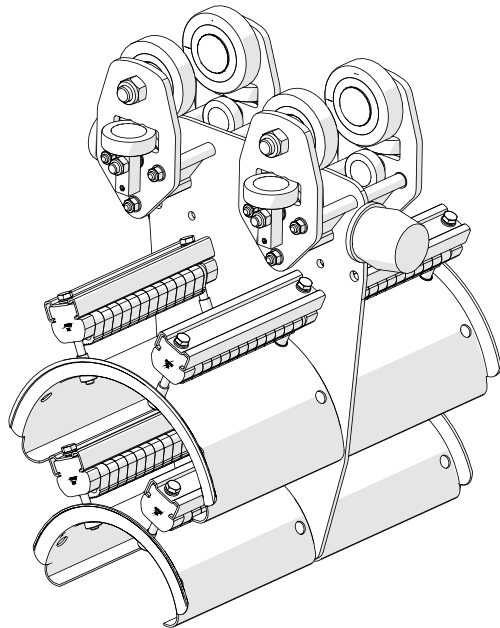


List of Spare Parts

Cable Trolley | Towing Trolley | End Clamp Program 0365

Order Number: 03-L066-0130 | 03-M066-0160 | 03-E065-0145



Conductix-Wampfler GmbH
Rheinstraße 27 + 33
79576 Weil am Rhein - Märkt
Germany

EL0365-0083-EN

www.conductix.com

Date: 2020-11-27

Purchase Order Number: -



Safety risk due to unauthorized spare parts!

The installation and/or use of unauthorized spare parts or accessories can have a negative impact on the structural properties. Therefore the active and passive safety can be affected. No liability is accepted or warranty given for damages that occur from the use of unauthorized spare parts.

→ Use only original spare parts from the manufacturer!



Illustrations in this documentation are provided for basic understanding and may deviate from the actual implementation of the unit!

→ See table for corresponding option (A,B or C)



If ordering spare parts the order number of the component parts and assembly groups must be given.

Phone: +49 (0) 7621 662-0

Fax: +49 (0) 7621 662-144

info.de@conductix.com

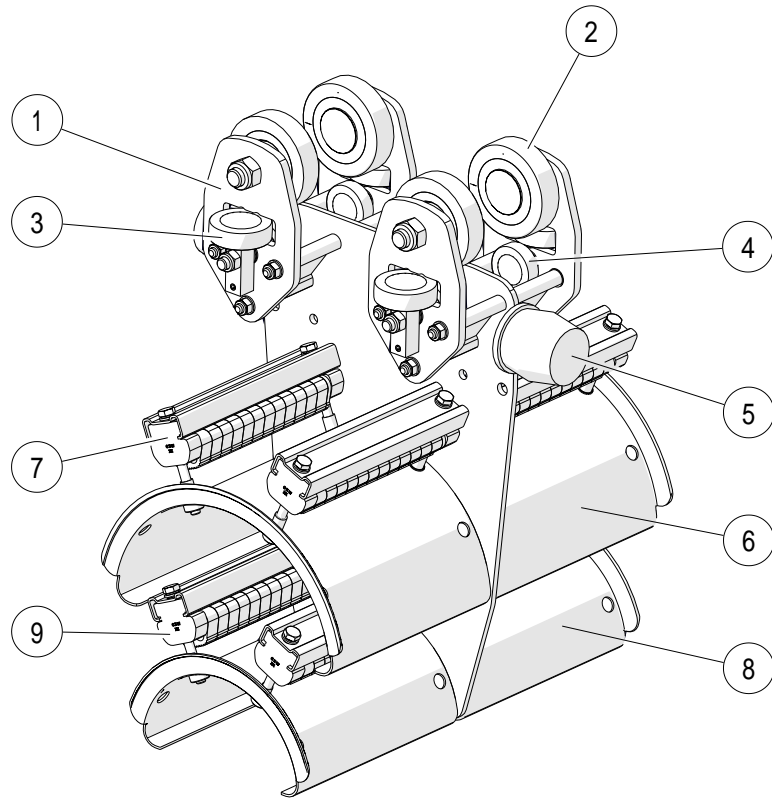
www.conductix.com

List of Spare Parts

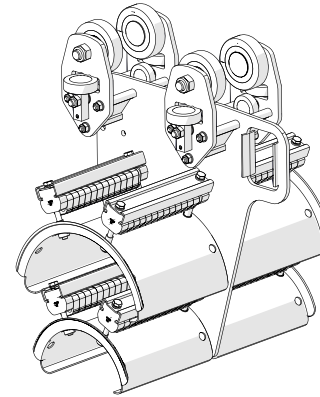
Cable Trolley | Towing Trolley | End Clamp Program 0365



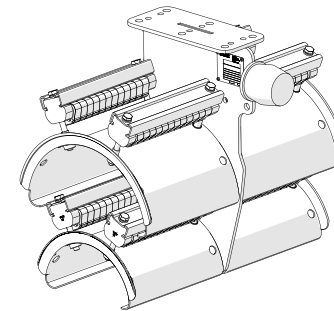
A



B



C



List of Spare Parts

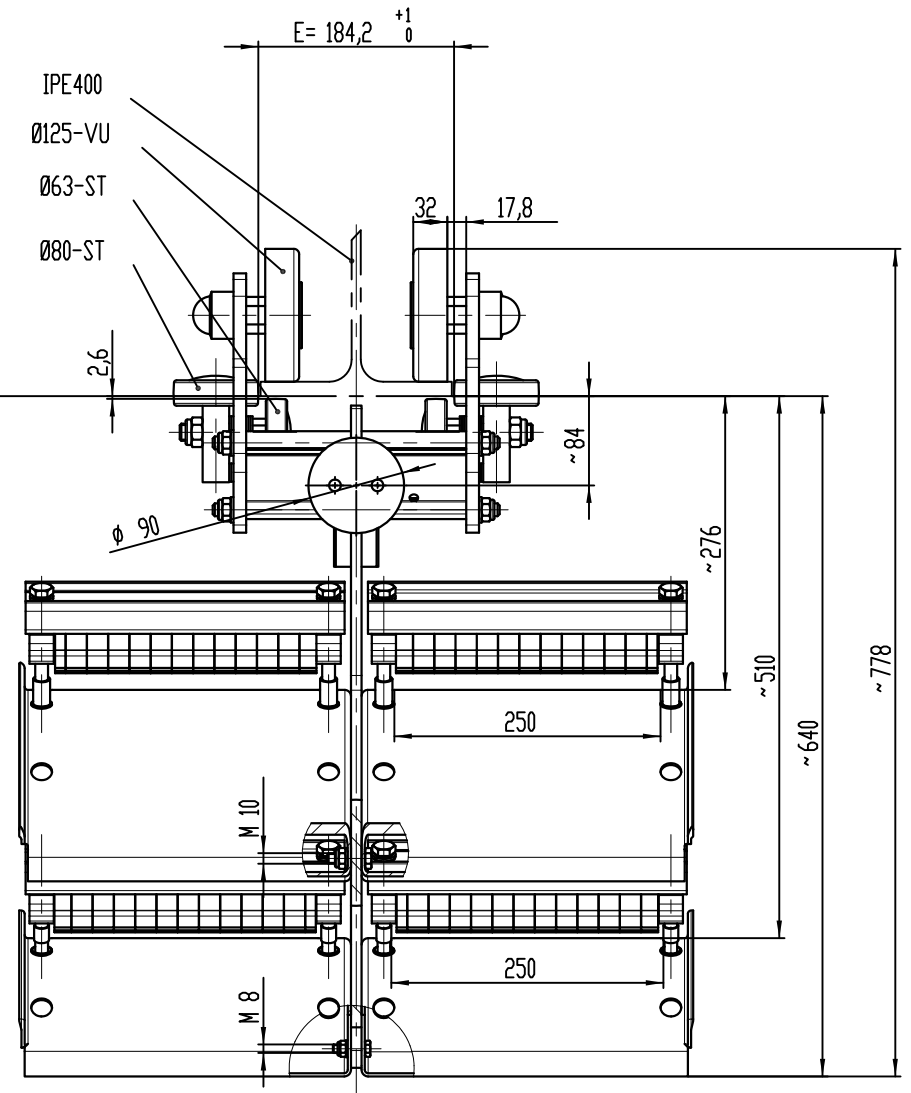
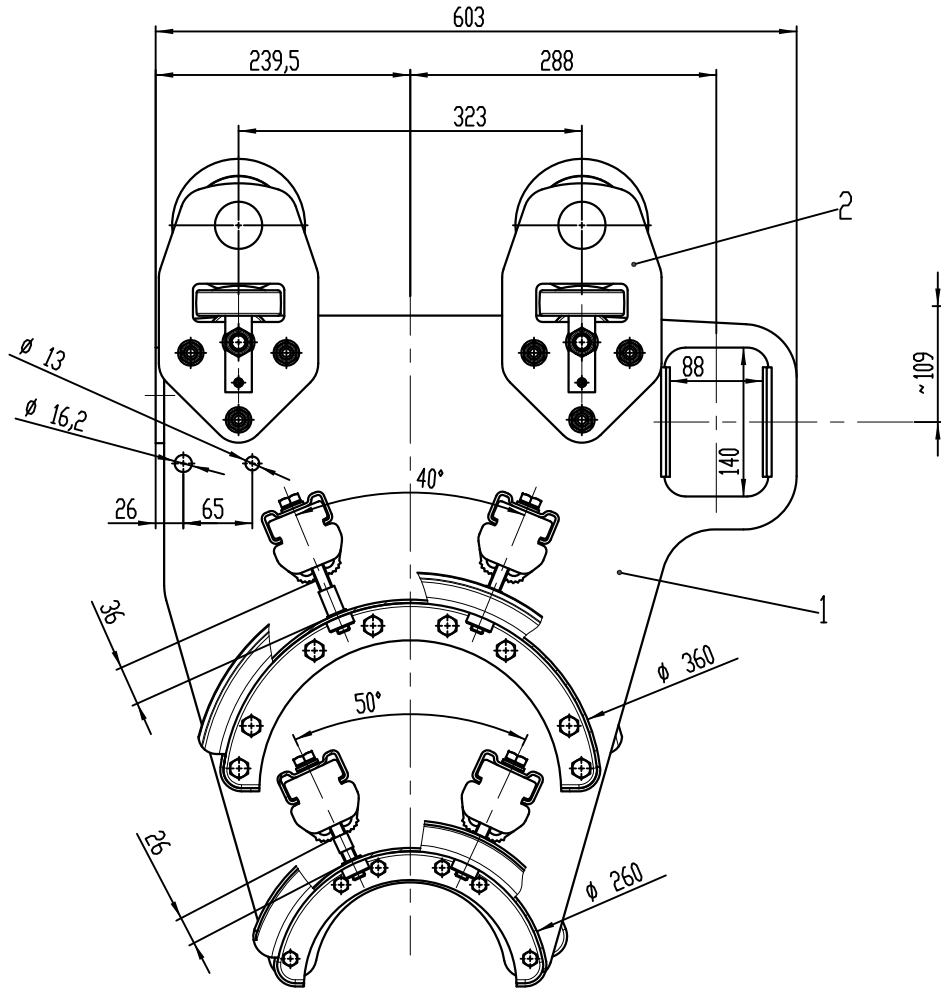


Cable Trolley | Towing Trolley | End Clamp Program 0365

Manufacturer details								User's notes	
Pos.	Description	Order No.	Quantity			Wearing Part	Additional Information	Comments	Items ordered
			A 03-L066-0130	B 03-M066-0160	C 03-E065-0145				
1	Running gear 125PU/080ST/063ST 0140	03-F103-0100	1	1	-	<input type="checkbox"/>	including Pos. 2, 3, 4		
2	Spare part roller Ø125PU	030113-125.2	4	4	-	<input checked="" type="checkbox"/>			
3	Spare part roller Ø080ST	030105-080.1	4	4	-	<input checked="" type="checkbox"/>			
4	Spare part roller Ø063ST	030108-063.2	4	4	-	<input checked="" type="checkbox"/>			
5	End stop buffer R 080x080	031980-080X080/517-01	2	-	1	<input checked="" type="checkbox"/>			
6	Support with clamping bar Ø360x250 C63	039004-360X250/070	1	1	1	<input type="checkbox"/>	including Pos. 7		
7	Clamping bar Ø360x250 C63	039010-360X250	1	1	1	<input type="checkbox"/>			
8	Support with clamping bar Ø260x250 C63	039004-260X250/070	1	1	1	<input type="checkbox"/>	including Pos. 9		
9	Clamping bar Ø260x250 C63	039010-260X250	1	1	1	<input type="checkbox"/>			

Copyright at these designs and all interests, which are entrusted to the receiver, remains at any time to our company. Without our written permission they may not be copied, multiplied, communicated third persons or made accessible.

Das Urheberrecht an diesen Zeichnungen und allen Beilagen, die den Empfänger anvertraut sind, verbleibt jederzeit unserer Firma. Ohne unsere schriftliche Genehmigung dürfen sie nicht kopiert, vervielfältigt, dritten Personen mitgeteilt oder zugänglich gemacht werden.

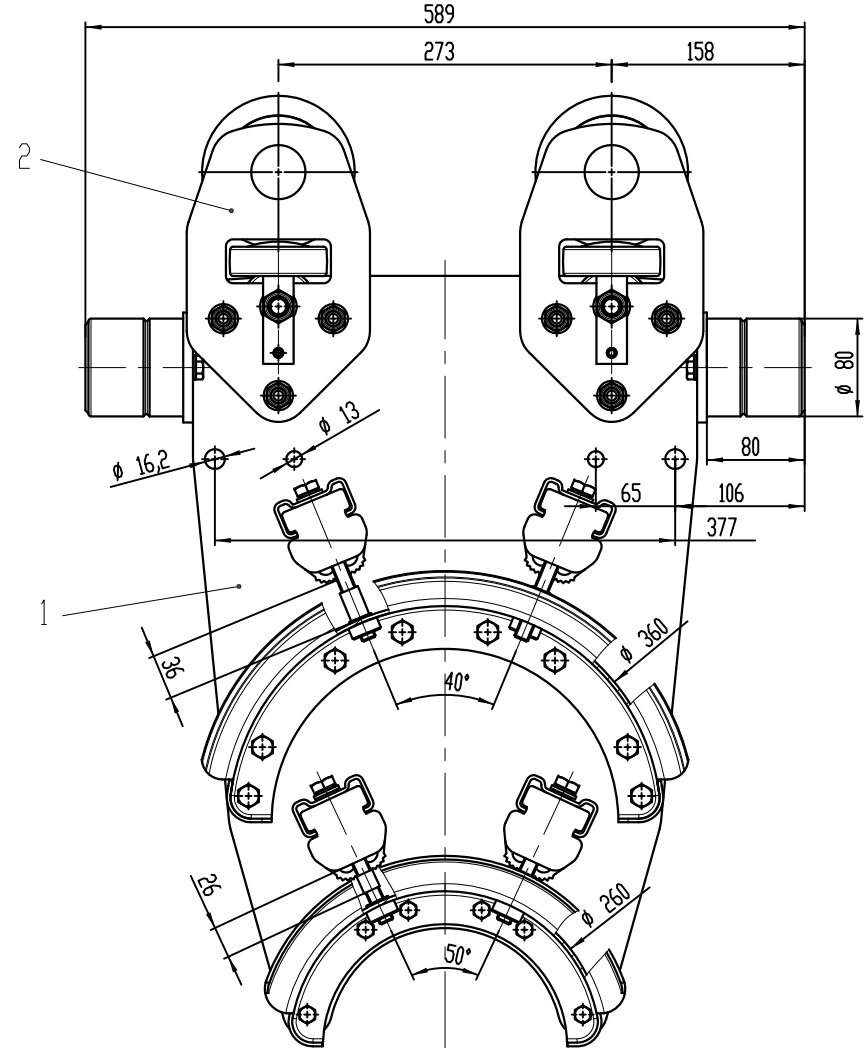
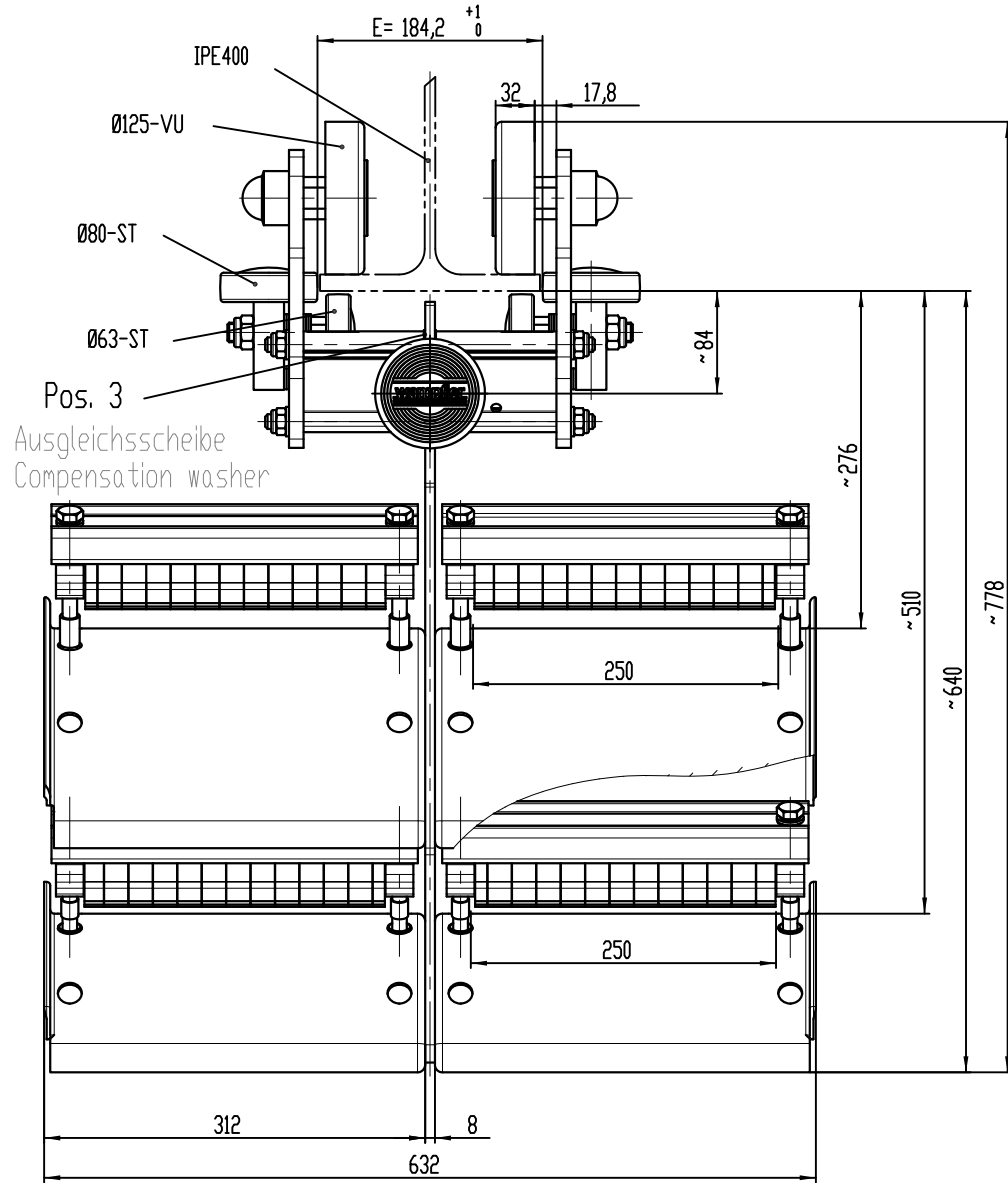


Material number: 3118148		$\sqrt{\text{w}} = \sqrt{\text{Rz100}}$ $\sqrt{\text{v}} = \sqrt{\text{Rz 25}}$ $\sqrt{\text{v}} = \sqrt{\text{Rz 6,3}}$	Allgemein-toleranz General tolerance ISO 2768-mK	Maßstab: Scale: 1:5	Gewicht: Weight: 86.980 KG	
			Material: ST			
			MITNEHMERWAGEN Ø360/Ø260X250 IPE400 TOWING TROLLEY Ø360/Ø260X250 IPE400			
			03-M066-0160			
Rev.	Modification	Date	Name	Blatt Sheet 1 1 Bl. Sh.		

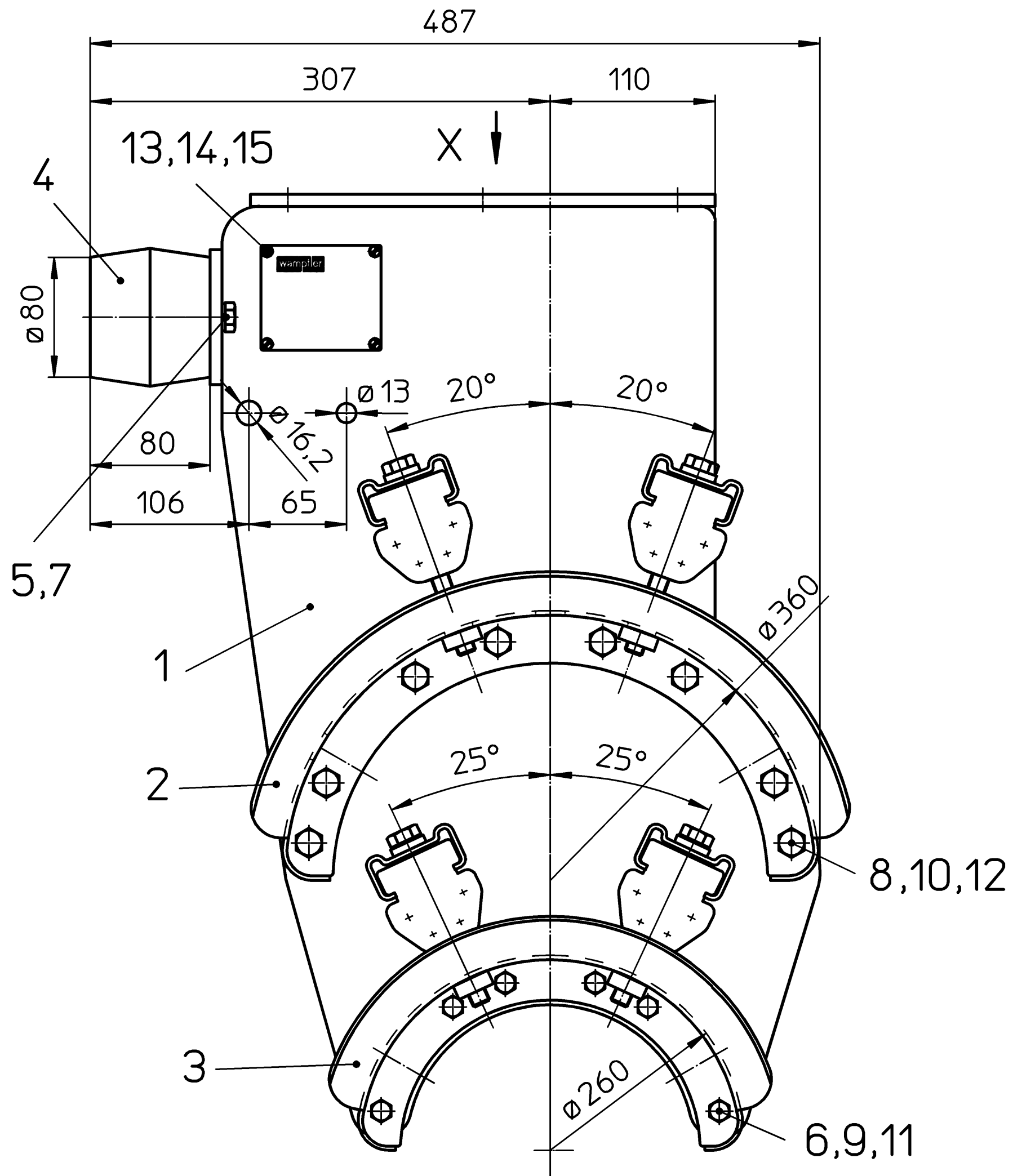


Copyright of these designs and all interests, which are entrusted to the receiver, remains at any time to our Company. Without our written permission they may not be copied, multiplied, communicated third persons or made accessible.

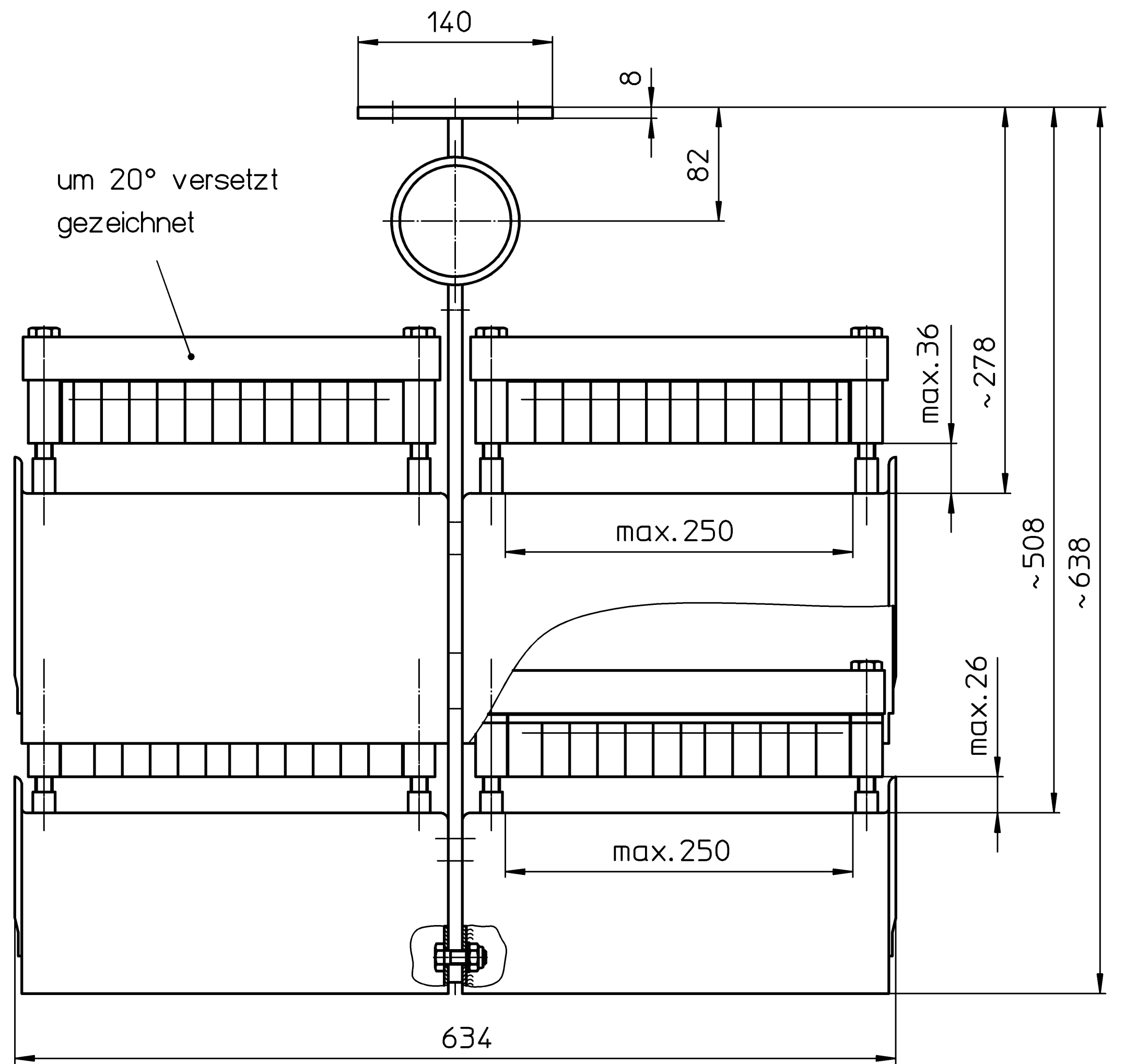
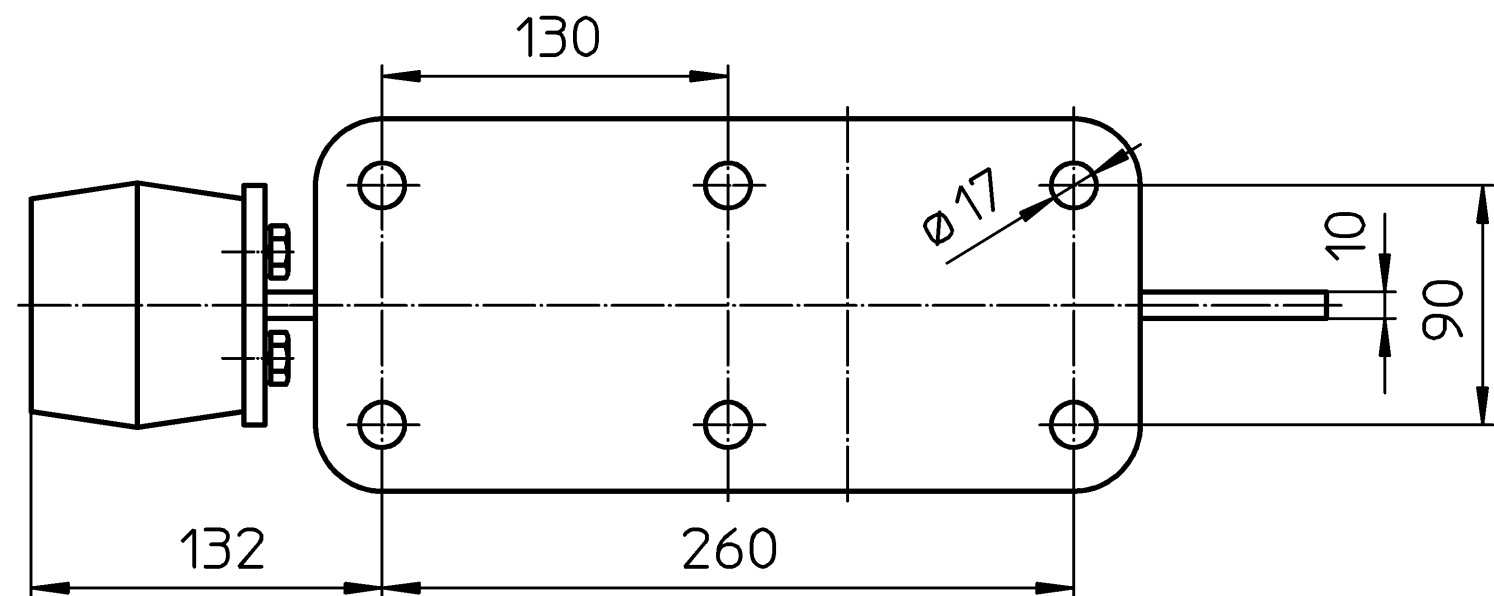
Das Urheberrecht an diesen Zeichnungen und allen Rechten, die den Empfänger anvertraut sind, verbleibt jederzeit unserer Firma. Ohne unsere schriftliche Genehmigung dürfen sie nicht kopiert, vervielfältigt, Dritten Personen mitgeteilt oder zugänglich gemacht werden.



Material number: 3033711		$\sqrt{\quad} = RZ 200$ $\sqrt{\quad} = RZ 25$ $\sqrt{\quad} = RZ 6,3$	Allgemein-toleranz General tolerance ISO 2768-mK	Maßstab: Scale: 1:4 Gewicht: Weight: 76.660 KG	
		ISO 2768-mK		Material:	
		Drawn: 25.11.2011 STBR Exam.: 25.11.2011 ZP-08 Stand:		LEITUNGSWAGEN MIT FW $\varnothing 125$ VU/ $\varnothing 80$ ST/ $\varnothing 63$ ST FU CABLE TROLLEY MIT FW $\varnothing 125$ VU/ $\varnothing 80$ ST/ $\varnothing 63$ ST FU	
Rev. Modification Date Name		 <small>© DELACHAUX GROUP</small>		03-L066-0130	
				Blatt Sheet 1 1 Bl. Sh.	



X ohne Auflage / View without cable support

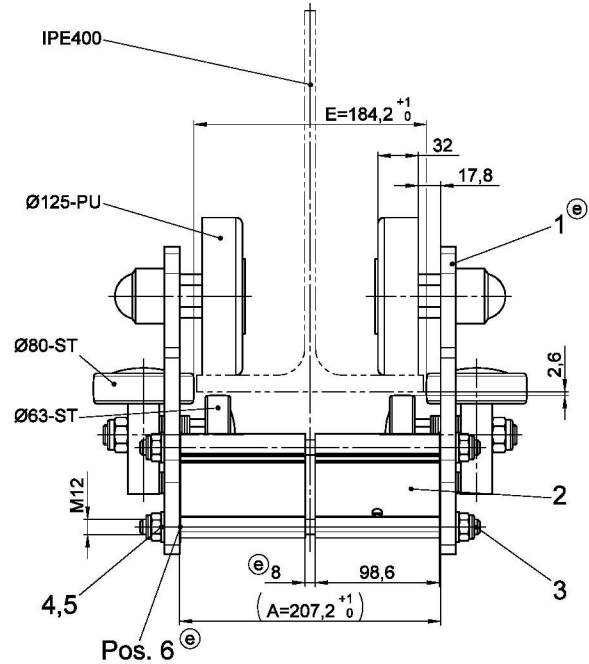
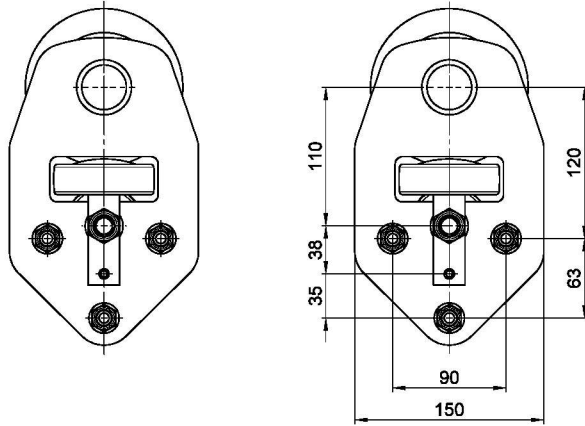


Das Urheberrecht an diesen Zeichnungen und allen Beilagen, die dem Empfänger anvertraut sind, verbleibt jederzeit unserer Firma. Ohne unsere schriftliche Genehmigung dürfen sie nicht kopiert, vervielfältigt, dritten Personen mitgeteilt oder zugänglich gemacht werden.

3033734		Maßstab %	Gewicht: 52,90kg	
		Endklemme, komplett $\varnothing 360/\varnothing 260 \times 250$ (V-Klemmung)		
	Datum			Name
	Bearb. 10.06.96			MM
	Gepr.			
	Norm			
		FOR0000-0021		
b)	Zeichnung aktualisiert; 21.02.06 kpla		Wampfler AG 79576 Weil am Rhein-Maerkt Rheinstrasse 27 u. 33	
a	Pos. 11	20.08.96 MM		
Zust.	Änderung	Datum Name		
03-E065-0145 b			Blatt	
			Bl.	

Copyright at these designs and all interests, which are entrusted to the receiver, remains at the disposal of the sender. Any reproduction or transmission may not be copied, multiplied, or communicated third persons or made accessible.

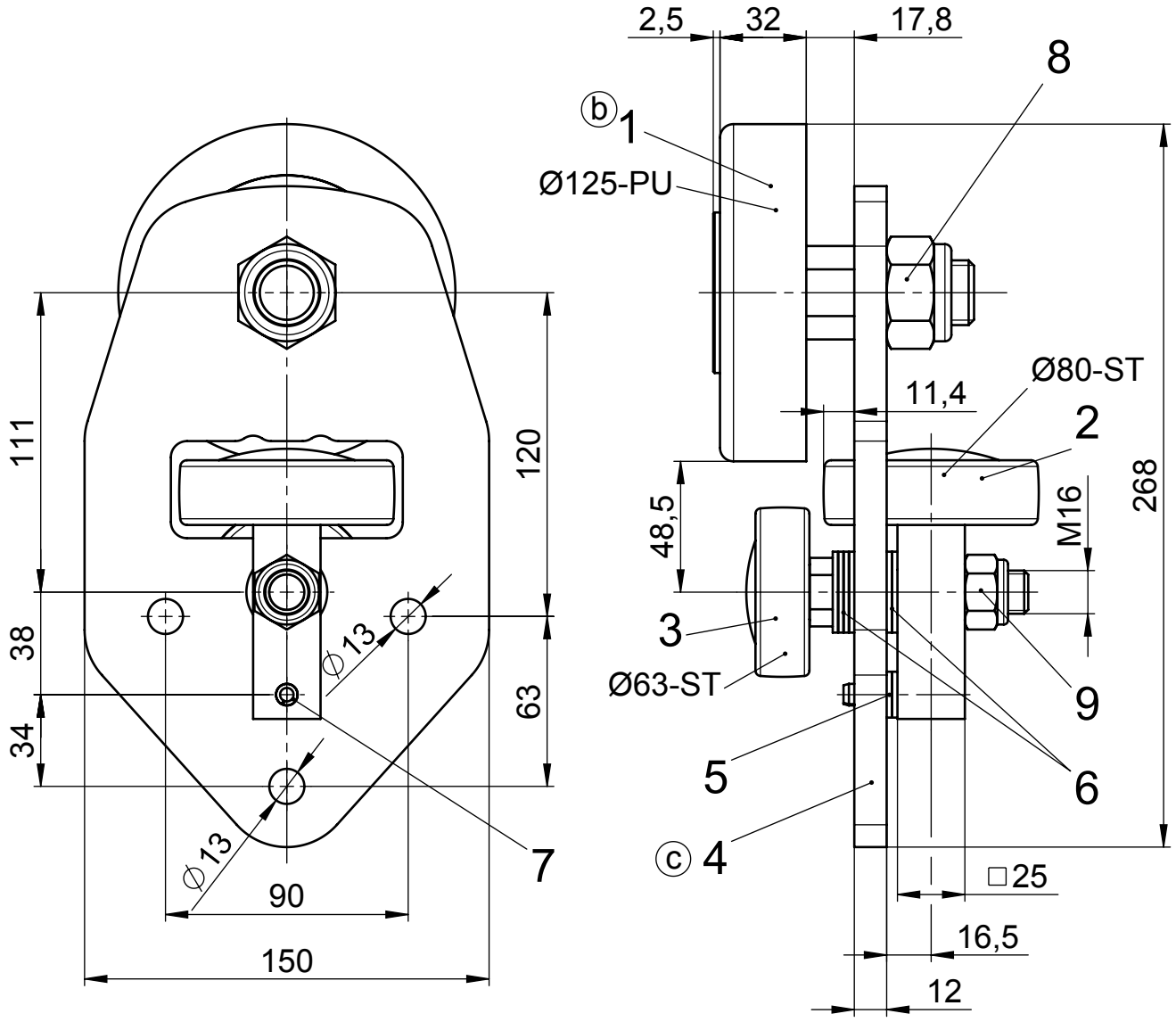
Das Urheberrecht an diesen Zeichnungen und allen Beilagen, die dem Empfänger anvertraut sind, bleibt dem Lieferanten vorbehalten. Nachdruck, Vervielfältigung und Verbreitung, auch auszugsweise, ist ohne schriftliche Genehmigung des Lieferanten. Diese Personen sind ausdrücklich als nicht-kopierbar, vervielfältigt, Dritten Personen zugänglich oder zugänglich gemacht verboten.



Pos. 6
Ausgleichsscheibe
Compensation washer

Material number: 76243		\checkmark \checkmark \checkmark \checkmark \checkmark \checkmark \checkmark \checkmark \checkmark \checkmark \checkmark \checkmark \checkmark \checkmark \checkmark \checkmark	Rz100 Rz 25 Rz 6,3	Allgmein- toleranz	General tolerance	Maßstab: Scale: 1:3	Gewicht: Weight: 22.860 KG
				ISO 2768-mK		Material:	
				Date	Name		
				Drawn	10.06.1996	MM	
				Exam.	13.12.2012	ZP-03	
				Stand:			
						FAHRWERK 125PU/80ST/63ST 0140	
						RUNNING GEAR 125PU/80ST/63ST 0140	
E	1011982	13.12.2012	KPLA			03-F103-0100	
Rev.	Modification	Date	Name			E	Blatt Sheet 1 1 Bl. St.

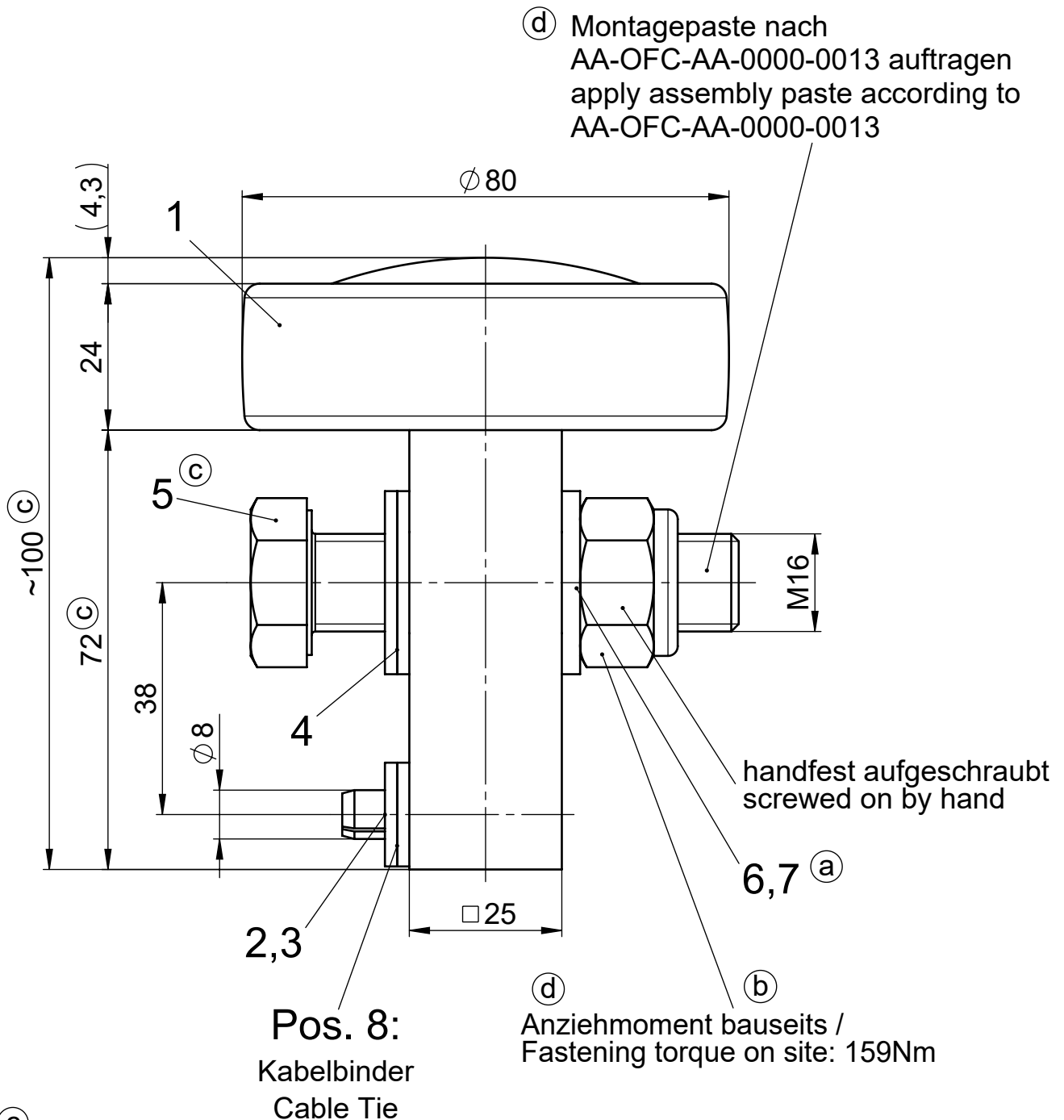
Copyright at these designs and all interests, which are entrusted to the receiver, remains at any time to our company. Without our written permission they may not be copied, multiplied, communicated third persons or made accessible.



Das Urheberrecht an diesen Zeichnungen und allen Beilagen, die dem Empfänger anvertraut sind, verbleibt jederzeit unserer Firma. Ohne unsere schriftliche Genehmigung dürfen sie nicht kopiert, vervielfältigt, dritten Personen mitgeteilt oder zugänglich gemacht werden.

Material number: 3033699		$\sqrt{w} = \sqrt{Rz100}$ $\sqrt{x} = \sqrt{Rz 25}$ $\sqrt{y} = \sqrt{Rz 6,3}$	Allgemein-toleranz	General tolerance	Maßstab: Scale: 1:2.5	Gewicht: Weight: 5,425 KG		
			ISO 2768-mK		Material:			
			Date	Name	SEITENSCHILD 125PU/080ST/063ST SIDE SHIELD 125PU/080ST/063ST			
			Drawn 02.08.2017	KPLA				
			Exam. 11.08.2017	FKES				
			Stand.					
B	000001011982	13.12.2012	KPLA	03-S016-1617			Blatt Sheet 1	
C	000001017364	20.10.2016	KPLA				D	1 Bl. Sh.
D	000001018743	02.08.2017	ALAE					
Rev.	Modification	Date	Name	 <small>© DELACHAUX GROUP</small>				

The copyright of these designs and all attachments entrusted to the recipient remains with our company at all times. Without our written permission they may not be copied, duplicated, disclosed or made available to third parties.



(d) Montagepaste nach AA-OFC-AA-0000-0013 auftragen
 apply assembly paste according to AA-OFC-AA-0000-0013

handfest aufgeschraubt
 screwed on by hand

(d) Anziehmoment bauseits /
 Fastening torque on site: 159Nm

Pos. 8:
 Kabelbinder
 Cable Tie

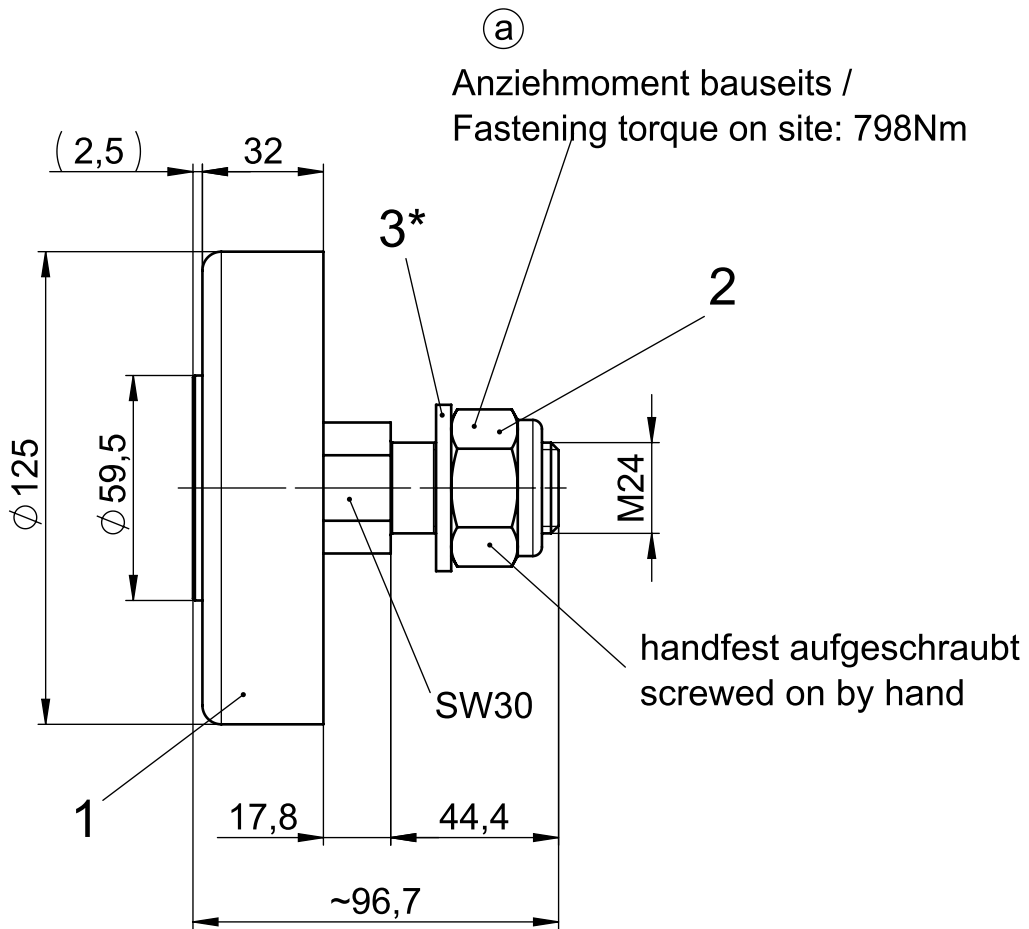
(c) Pos. 8:
 Kabelbinder zur Befestigung der Scheiben (Pos. 3) und Muttern (Pos. 9) nur für Versand.
 Cable tie for fixation of washers (Pos. 3) and hexagon nuts (Pos. 9), only for shipment.

Bei der Anwendung am Fahrwerk mit Gegendruckrolle entfällt die Sechskantschraube (Pos. 5)
 Hexagon screw (Pos. 5) not necessary if used on running gear with anti-lift-roller

Das Urheberrecht an diesen Zeichnungen und allen Beilagen, die dem Empfänger anvertraut sind, verbleibt jederzeit unserer Firma. Ohne unsere schriftliche Genehmigung dürfen sie nicht kopiert, vervielfältigt, dritten Personen mitgeteilt oder zugänglich gemacht werden.

Material number: 3048183		$\sqrt{w} = \sqrt{Rz100}$ $\sqrt{x} = \sqrt{Rz25}$ $\sqrt{y} = \sqrt{Rz6,3}$	Allgemein- toleranz	General tolerance	Maßstab: Scale: 1:1	Gewicht: Weight: 1,385 KG
			ISO 2768-mK		Material:	03-R007-0359
				Date	Name	ROLLE ERSATZTEIL 080ST SPARE PART ROLLER 080ST
				Drawn 30.07.2018	GGRA	
				Exam. 06.08.2018	FKES	
				Stand.		
A	000001004949	19.03.2008	KPLA	CONDUCTIX wampfler <small>DELACHAUX GROUP</small>		030105-080.1
B	000001014917	09.12.2014	AGLA			
C	000001017278	26.07.2016	KPLA			
D	000001020780	30.07.2018	KPLA			
Rev.	Modification	Date	Name			D Blatt Sheet 1 1 Bl. Sh.

The copyright of these designs and all attachments entrusted to the recipient remains with our company at all times. Without our written permission they may not be copied, duplicated, disclosed or made available to third parties.



***) Montagevorschrift:**

Position 3: diese Scheibe muss am Seitenschild entfallen, wenn Gewindeüberstand am Bolzen kleiner 3,5mm

***) Assembly instruction:**

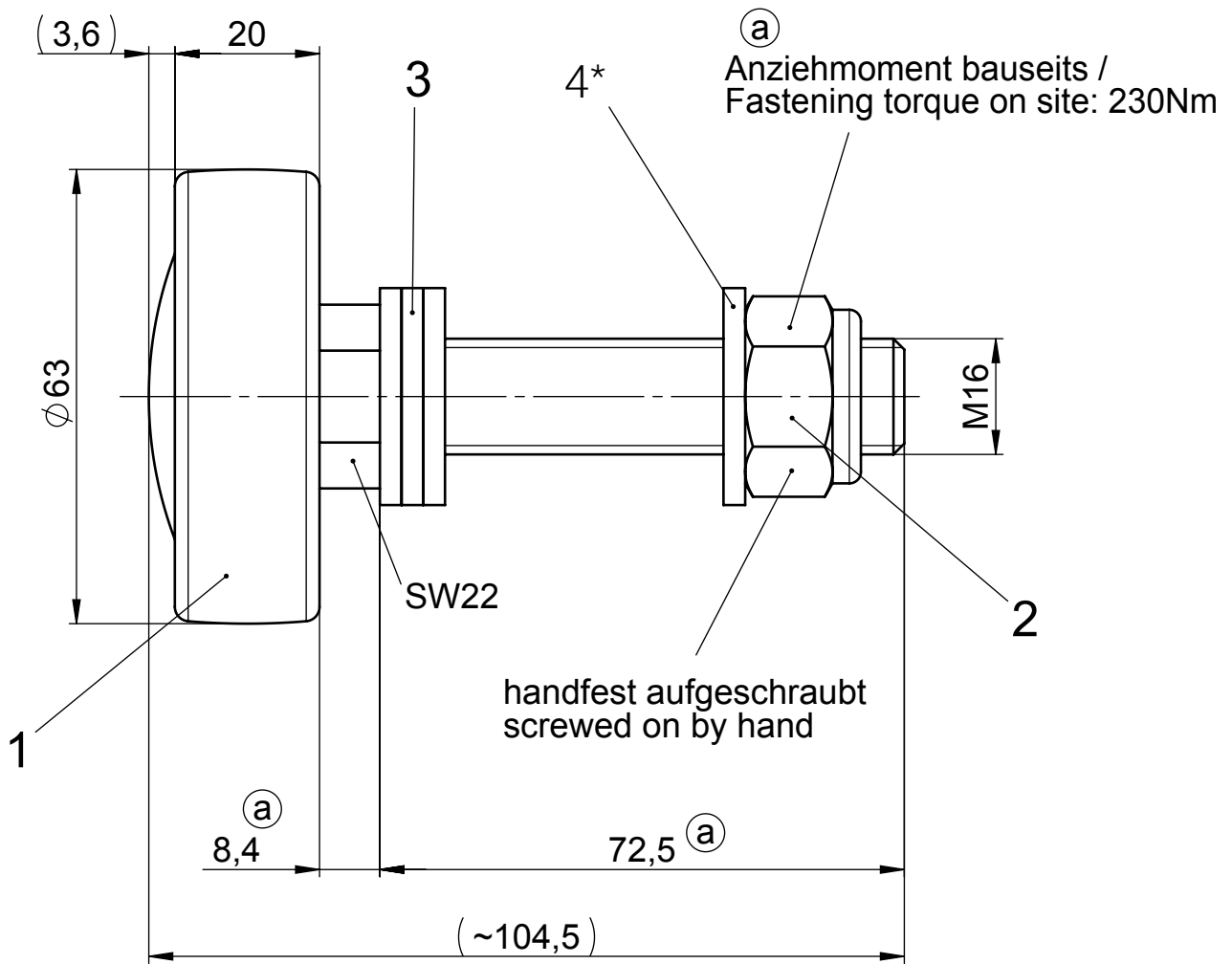
Position 3: don't assemble this washer, when protrusion of bolt end is less than 3,5mm.

Das Urheberrecht an diesen Zeichnungen und allen Beilagen, die dem Empfänger anvertraut sind, verbleibt jederzeit unserer Firma. Ohne unsere schriftliche Genehmigung dürfen sie nicht kopiert, vervielfältigt, dritten Personen mitgeteilt oder zugänglich gemacht werden.

Material number: 3121643		$\sqrt{w} = \sqrt{Rz100}$ $\sqrt{x} = \sqrt{Rz 25}$ $\sqrt{y} = \sqrt{Rz 6,3}$	Allgemein- toleranz	General tolerance	Maßstab: Scale: 1:2	Gewicht: Weight: 1,412 KG	
			ISO 2768-mK		Material: 03-R007-3501		
			Date	Name	ROLLE ERSATZTEIL 125PU SPARE PART ROLLER 125PU		
			Drawn	22.06.2017 KPLA			
			Exam.	23.06.2017 FKES			
			Stand.				
-		27.04.2012	KPLA	030113-125.2			B
A	000001014917	19.03.2015	KPLA				
B	000001018743	22.06.2017	KPLA				
Rev.	Modification	Date	Name	1			Bl. Sh.



The copyright of these designs and all attachments entrusted to the recipient remains with our company at all times. Without our written permission they may not be copied, duplicated, disclosed or made available to third parties.



***) Montagevorschrift:**
 Position 4: diese Scheibe muss am Seitenschild entfallen, wenn Gewindeüberstand am Bolzen kleiner 3,5mm

***) Assembly instruction:**
 Position 4: don't assemble this washer, when protrusion of bolt end is less than 3,5mm.

Das Urheberrecht an diesen Zeichnungen und allen Beilagen, die dem Empfänger anvertraut sind, verbleibt jederzeit unserer Firma. Ohne unsere schriftliche Genehmigung dürfen sie nicht kopiert, vervielfältigt, dritten Personen mitgeteilt oder zugänglich gemacht werden.

Material number: 3051504		$w/\sqrt{\quad} = \sqrt{Rz100}$ $x/\sqrt{\quad} = \sqrt{Rz25}$ $y/\sqrt{\quad} = \sqrt{Rz6,3}$	Allgemein- toleranz	General tolerance	Maßstab: Scale: 1:1	Gewicht: Weight: 0,580 KG
			ISO 2768-mK		Material: 03-R007-0065	
			Date	Name	ROLLE ERSATZTEIL 063ST SPARE PART ROLLER 063ST	
			Drawn	10.03.2015 KPLA		
			Exam.	13.03.2015 FSCH		
			Stand.			
-		31.10.2007	KPLA	 © DELACHAUX GROUP		030108-063.2
A	000001014917	10.03.2015	KPLA			
Rev.	Modification	Date	Name			1 Bl. Sh.

Benennung
Zusatzpuffer 80x80 NR-40 Shore A

Zeichnungs-Nummer
031980-080x080/514 a

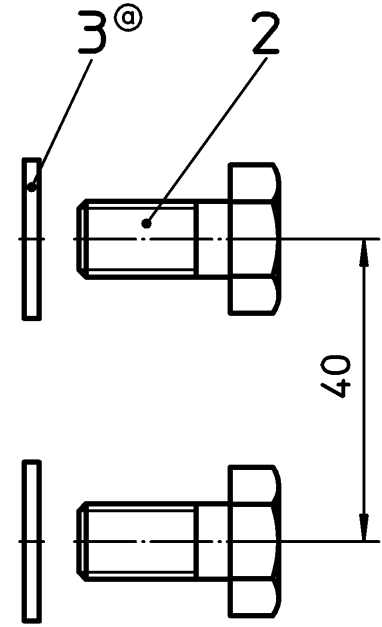
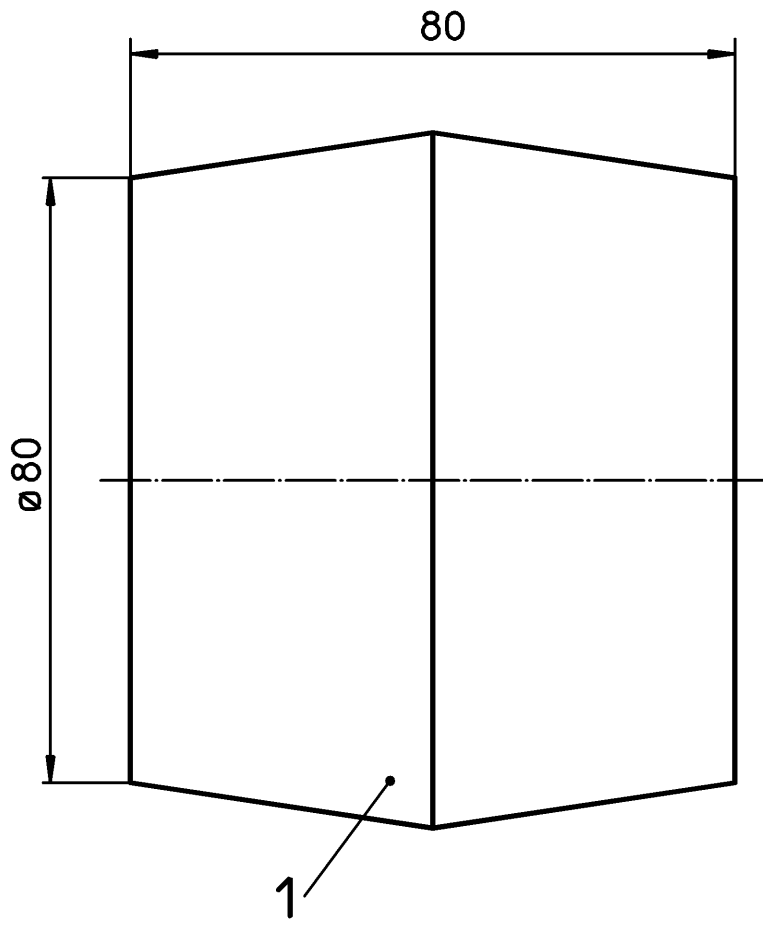
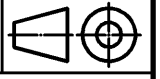
Maßstab
1:1
 gez. 02.12.03 DSig
 gepr.

Werkstoff

Gewicht
0,63 kg

Modell-Nummer
70495

Halbzeug:



Letzte Änderung:
 a) Pos.3 DIN127 -> DIN125 2.12.03 DSig

Das Urheberrecht an diesen Zeichnungen und allen Belegen, die dem Empfänger anvertraut sind, verbleibt jederzeit unserer Firma. Ohne unsere schriftliche Genehmigung dürfen sie nicht kopiert, vervielfältigt, dritten Personen mitgeteilt oder zugänglich gemacht werden.

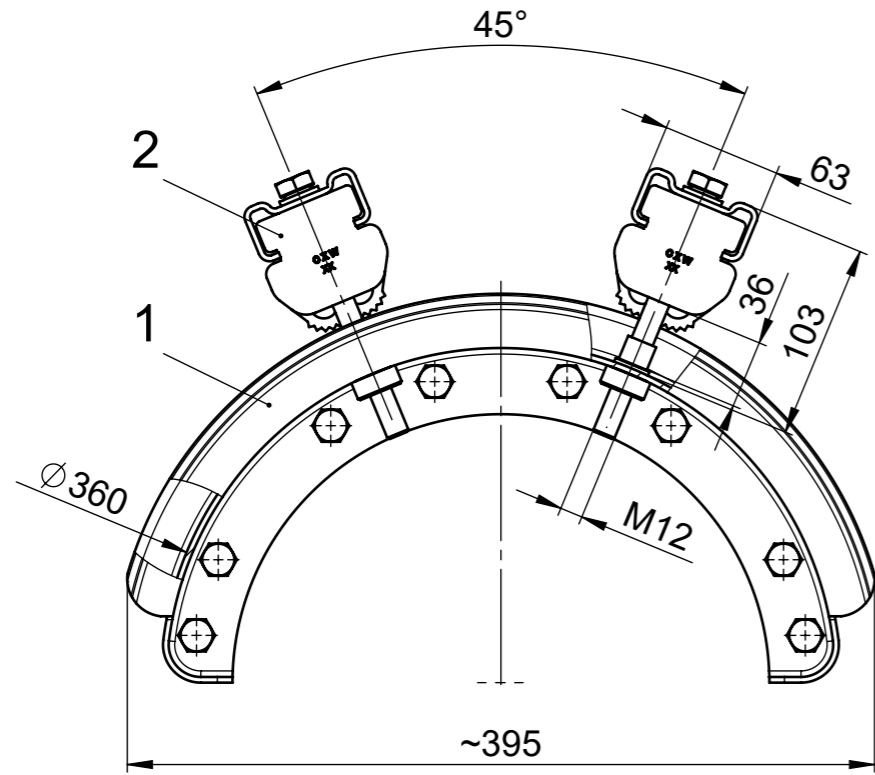
Teil	Benennung	Stück	Werkstoff	Zeichnungs-DIN-Nr.	Bemerkungen
3	Scheibe A10,5	2	1.4571	DIN 125	
2	6kt.-Schr. M10x20	2	1.4571	DIN 933	
1	Puffer	1		017301-080x080/514	Härte: 40 Shore A

Wampfler AG
 79576 Weil am Rhein-Maerkt, Rheinstrasse 27 u. 33

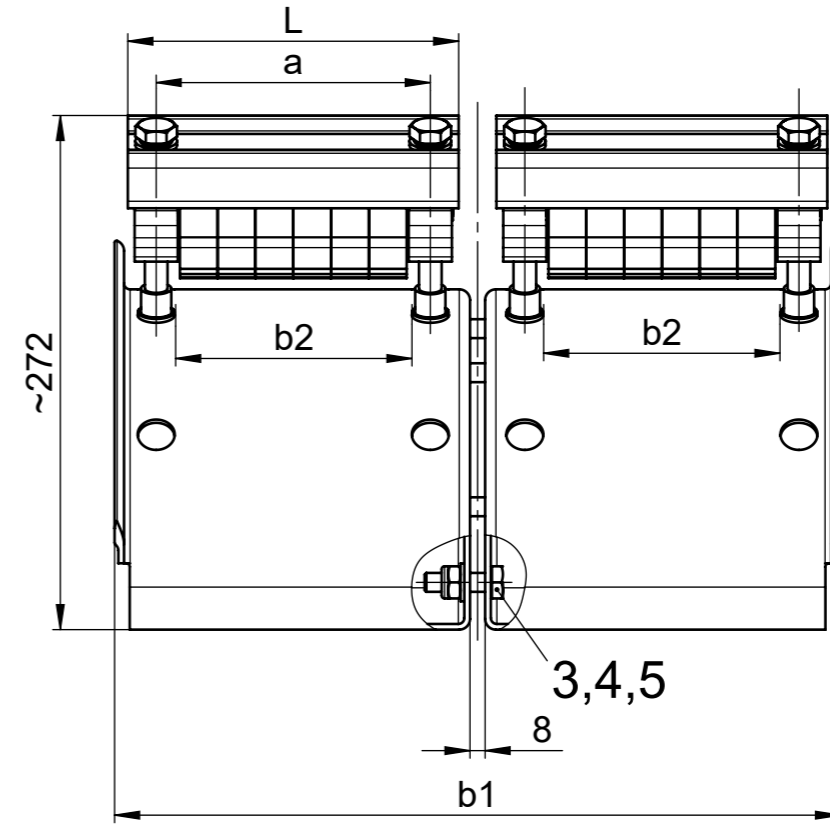
Zeichnungs-Nummer

FOR0000-0016c

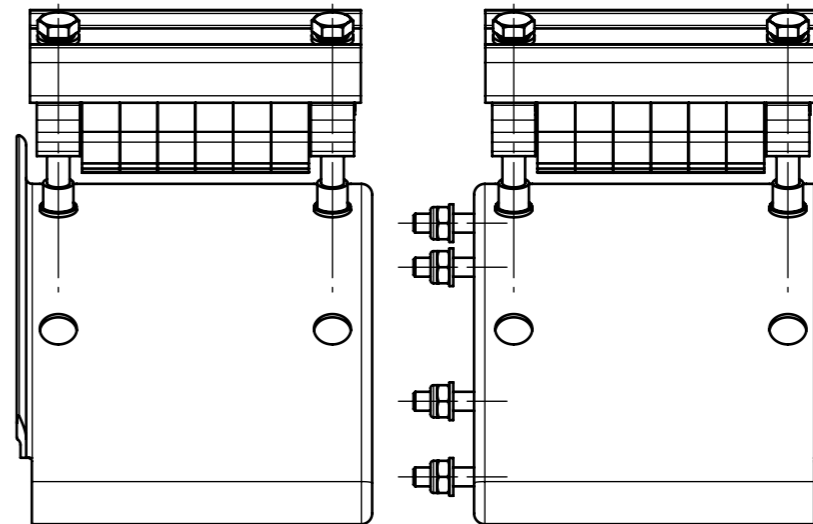
Copyright at these designs and all interests, which are entrusted to the receiver, remains at any time to our company. Without our written permission they may not be copied, multiplied, communicated third persons or made accessible.



Einbauzustand / mounted state



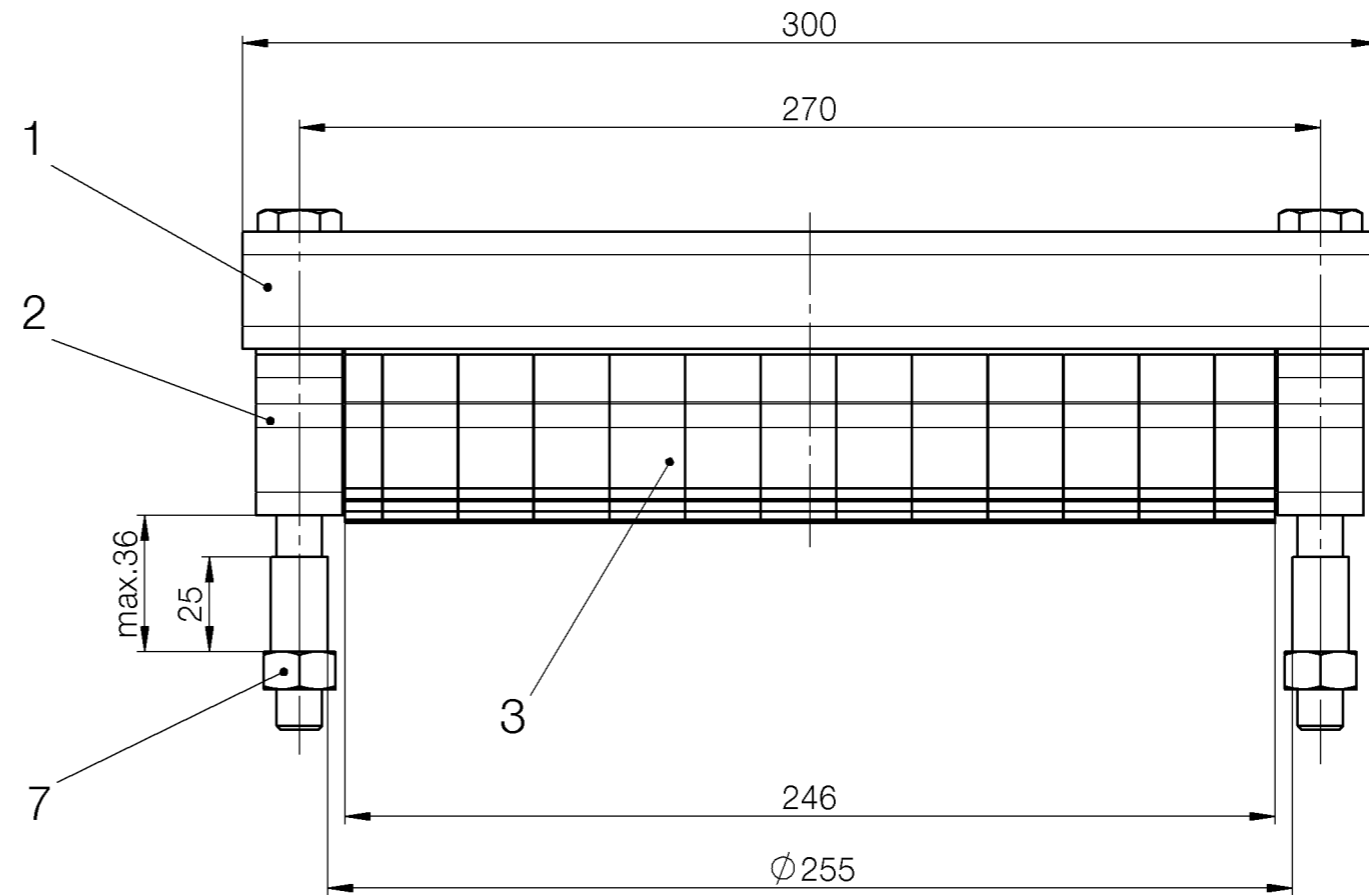
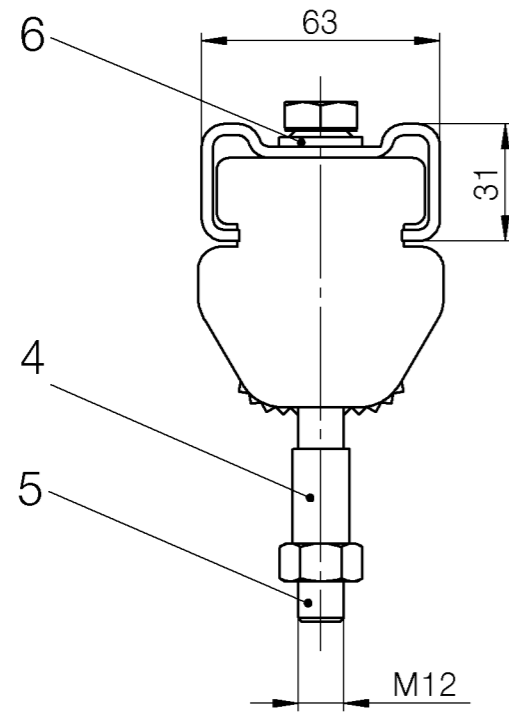
Auslieferungszustand / delivery state



Das Urheberrecht an diesen Zeichnungen und allen Beilagen, die dem Empfänger anvertraut sind, verbleibt jederzeit unserer Firma. Ohne unsere schriftliche Genehmigung dürfen sie nicht kopiert, vervielfältigt, dritten Personen mitgeteilt oder zugänglich gemacht werden.

Materialnummer	NO-Nummer	b1	b2	L	a
3051124	039004-360X125	384	125	175	145
3051200	039004-360X200	532	200	250	220
3051202	039004-360X250	632	250	300	270
3094670	039004-360X320	772	320	370	340

Material number:	$w/\sqrt{Rz100}$ $\checkmark/\sqrt{Rz 25}$ $\checkmark/\sqrt{Rz 6,3}$	Allgemein-toleranz	General tolerance	Maßstab: 1:4 Scale:	Gewicht: KG Weight:
		ISO 2768-mK		Material:	
		Date	Name	AUFLAGE KOMPLETT Ø360 SUPPORT COMPLETE Ø360	
		Drawn	24.02.2020 ESCH		
		Exam.	26.02.2020 FKES		
		Stand.			
		 DELACHAUX GROUP		039004-360Xxxx	-
Rev.	Modification	Date	Name	1	Bl. Sh.

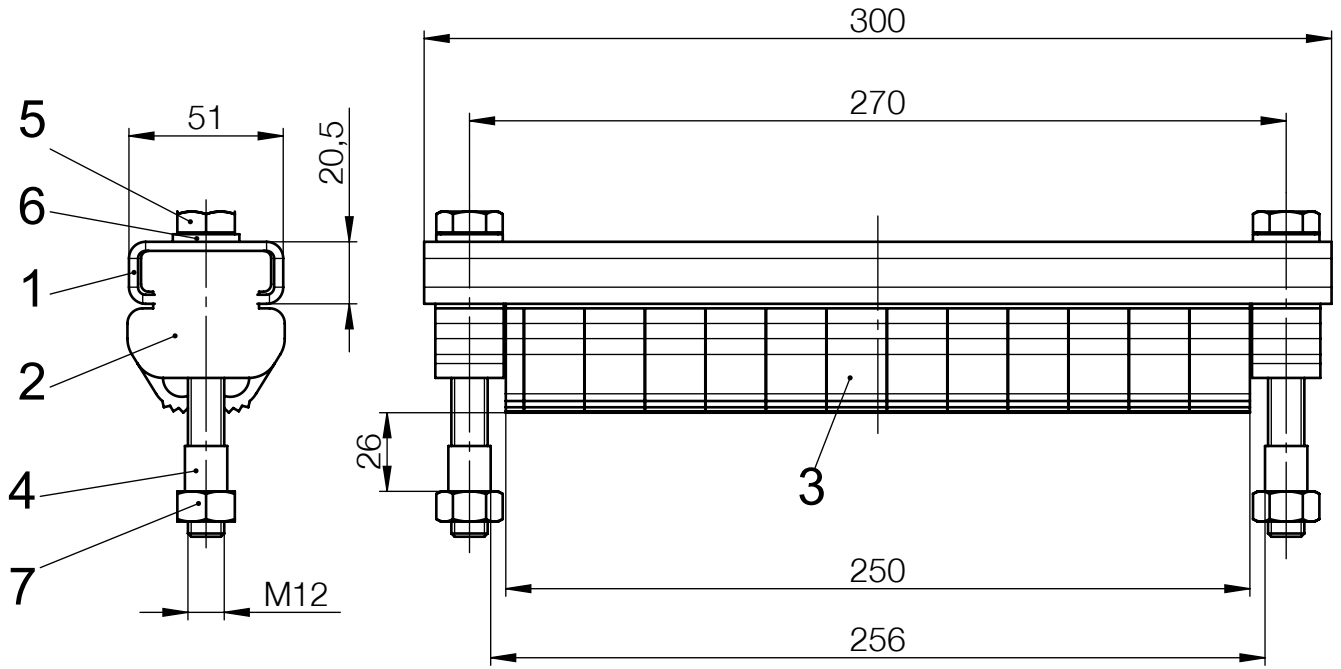


Sechskantmutter (Pos.7) dient nur zur Transportsicherung
 Hexagonal nut (pos.7) is only for transport.

Das Urheberrecht an diesen Zeichnungen und allen Beilagen, die dem Empfänger anvertraut sind, verbleibt jederzeit unserer Firma. Ohne unsere schriftliche Genehmigung dürfen sie nicht kopiert, vervielfältigt, dritten Personen mitgeteilt oder zugänglich gemacht werden.

Mat.Nummer: 3054997		Allgemein-toleranz ISO2768-mK		$w/\sqrt{Rz100}$ $x/\sqrt{Rz25}$ $y/\sqrt{Rz6,3}$	Maßstab: 1:2	Gewicht: 2,200 KG
					Werkstoff, Halbzeug	
		Datum	Name	KLEMMLEISTE KPL.Ø360X250 ET CLAMPING BAR Ø360X250 SPARE PART		
		Bearb. 21.04.2008	CRIE			
		Gepr. 21.04.2008	ZP-08			
		Norm				
		wampfler		039010-360X250		
		solutions for a moving world				
Zust.	Änderung	Datum	Name			Blatt
		21.04.2008	CRIE			Bl.

Copyright at these designs and all interests, which are entrusted to the receiver, remains at any time to our company. Without our written permission they may not be copied, multiplied, communicated third persons or made accessible.



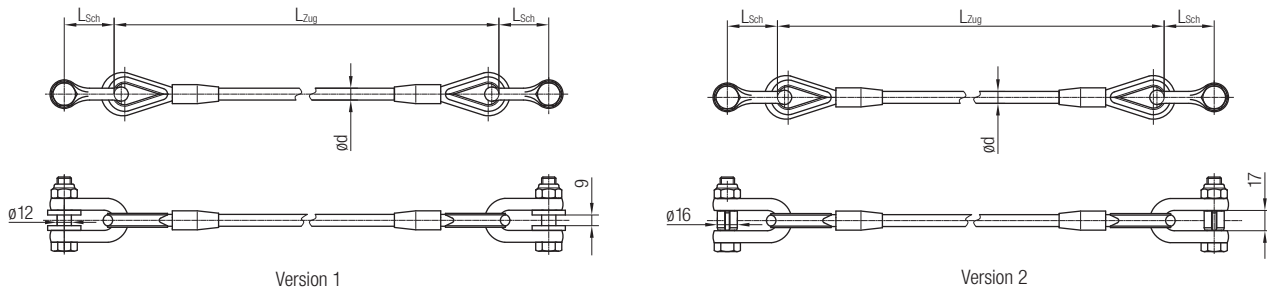
Pos. 7:
Sechskantmutter nur für Versand
Hexagon nut only for shipment

Das Urheberrecht an diesen Zeichnungen und allen Beilagen, die dem Empfänger anvertraut sind, verbleibt jederzeit unserer Firma. Ohne unsere schriftliche Genehmigung dürfen sie nicht kopiert, vervielfältigt, dritten Personen mitgeteilt oder zugänglich gemacht werden.

Material number: 3187363		$\sqrt{w} = \sqrt{Rz100}$ $\sqrt{x} = \sqrt{Rz 25}$ $\sqrt{y} = \sqrt{Rz 6,3}$	Allgemein- toleranz	General tolerance	Maßstab: 1:2.5 Scale:	Gewicht: 1,880 KG Weight:	
ISO 2768-mK				Material:			
			Date	Name	KLEMMLEISTE Ø260X250 C50 ET CLAMPING BAR Ø260X250 C50 ET		
			Drawn	22.01.2016			RAOB
			Exam.	22.01.2016			NTRU
			Stand.				
						039010-260X250	
Rev.	Modification	Date	Name		Blatt Sheet 1 1 Bl. Sh.		

Accessories for Program 0350, 0360 and 0364

Towing Ropes

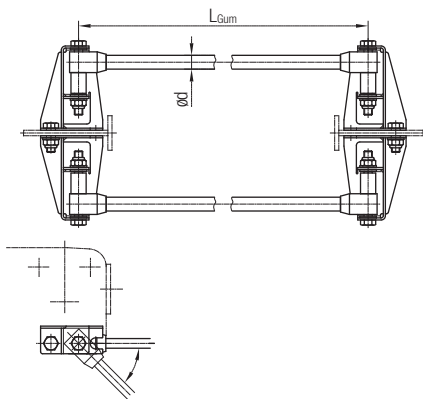


Order No.	ød [mm]	L _{Sch}	Material			Version	Program	for Main Rollers ød [mm]
			Rope	Shackle	Fasteners			
031962	10	42	Galvanized steel	Galvanized steel	Galvanized steel/ aluminum	1	0350	50, 63, 80, 100
031963			PVC-coated	steel			0360	50, 63
031965/1	8/10	48	Stainless Steel	Stainless Steel	Stainless Steel Aluminum - Seawater resistant	1	0350	50, 63, 80, 100
031965/2			PVC-coated				Aluminum - Seawater resistant	2
							0364	100, 112

Notes

- We recommend the installation of towing ropes for a speed from 50 m/min or a travel distance >30 m
- The towing ropes are PVC-coated for a better protection against corrosion and to prevent the cables from damage
- For the calculation of the lengths please refer to our Engineering Guidelines for Festoon Systems KAT0300-0101
- In case of order please state the lengths L_{Zug} of the respective towing ropes

Damping Devices



Technical details

- Shock cord: rubber with plastic plait
- Console: hot-dip galvanized steel
- Fasteners: stainless steel

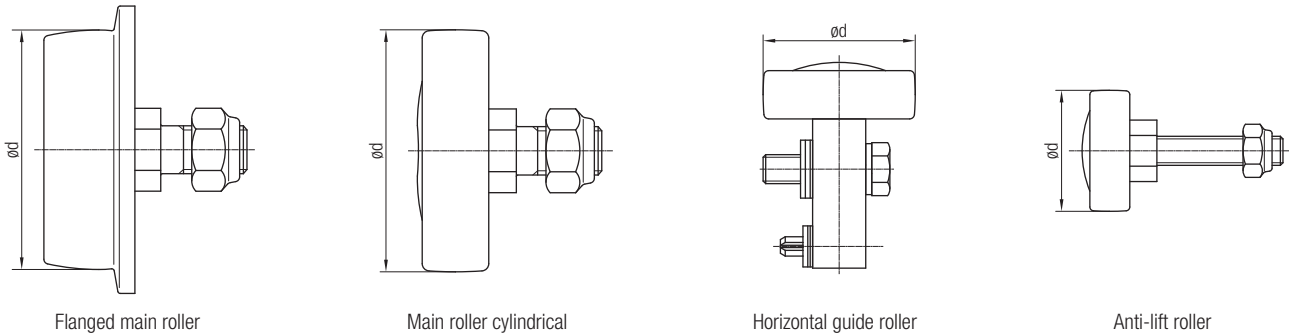
Notes

- We recommend the installation of damping devices for high speed and/or short cable loops
- For the calculation of the length please refer to our Engineering Guidelines
- In case of order please state the length of the respective shock cords
- Number and diameter are defined by weight load, cable loop and speed

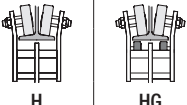
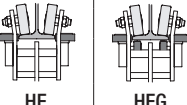
Order No.	Number of Shock Cords	ød [mm]	Program	for Main Rollers ød [mm]
031966	2	14	0350	50, 63, 80, 100
031970-2	2	20	0350	50, 63, 80, 100
031966	2	14	0360	50, 63
031970-2	2	20	0360	50, 63
031976-2	2	20	0360, 0364	80, 100, 112, 125
031977-2	4	20	0360, 0364	80, 100, 112, 125
031978-2	6	20	0360, 0364	80, 100, 112, 125

Wear Parts for Program 0350, 0360 and 0364

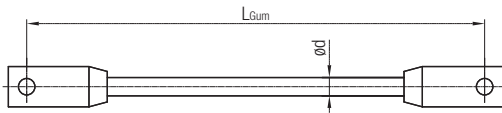
Replacement Rollers for Running Gear



Replacement Rollers for Running Gear $\varnothing 112$ mm and $\varnothing 125$ mm

Running Gear Type	Order No.	Description	Rollers		Approx. Weight [kg]	For I-beams	
			$\varnothing d$ [mm]	Material Bandage		Parallel Flange	Tapered Flange
 H HG	030113-112.1	Main roller cylindrical	112	Polyurethane	1.00	-	180
	030113-112.2					-	200 - 220
	030108-050.1	Anti-lift roller	50	Steel	0.27	-	180 - 220
	030102-125.1	Main roller cylindrical	125	Steel	3.00	-	200 - 220
	030113-125.1			Polyurethane	1.11		
	030108-063.1	Anti-lift roller	63	Steel	0.50		
 HF HFG	030113-112.2	Main roller cylindrical	112	Polyurethane	1.00	160 - 200	180 - 220
	030105-063.1	Horizontal guide roller	63	Steel	0.63		
	030108-050.1	Anti-lift roller	50	Steel	0.50		
	030102-125.2	Main roller cylindrical	125	Steel	3.00	180 - 200	200 - 220
	030113-125.2			Polyurethane	1.20		
	030105-080.1	Horizontal guide roller	80	Steel	0.82		
	030108-063.1	Anti-lift roller	63	Steel	0.50		

Shock Cords



Technical details

- Shock cord: rubber with plastic plait
- Fasteners: stainless steel/hot-dip galvanized steel

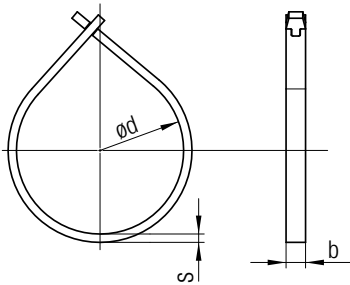
Note

In case of order please state the lengths L_{Gum} of the respective shock cords.

Order No.	$\varnothing d$ [mm]	Weight [kg/m]
031987	14	0.2
031989-2	20	0.4

Accessories for Program 0350, 0360 and 0364

Cable Organizers for Cable Loops

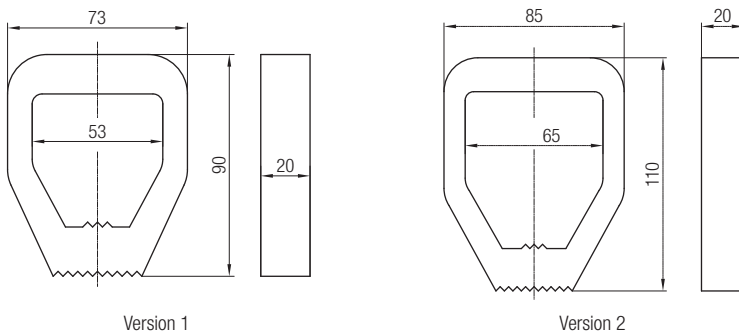


Order No.	ød [mm]	b [mm]	S [mm]	Material	Fasteners	Weight [kg]
031942-0300x15	300	30	20	Rubber	-	0.59

Note

For cable loops > 4 m, the cable organizer in addition to the flat and round cable clamps prevents an expansion of the cables at the lower section of the cable loop.

Additional Clamping Pieces for Round Cable Clamps



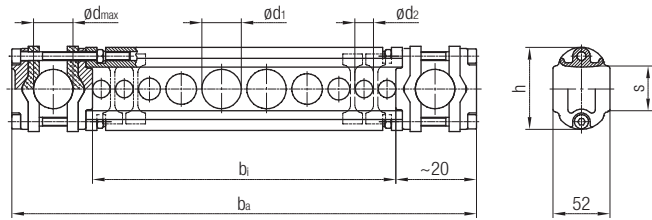
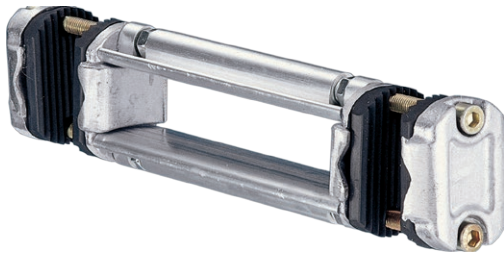
Note

Differences in diameter between adjacent cables of more than 15 mm require additional clamping pieces for a tight clamping.

Order No.	For Systems with Main Roller Diameter ød [mm]	Support diameter ød _a [mm]	Version	Material	Weight [kg]
031899-053x020/514	50 and 63	260 and 360	1	Rubber	0.06
031899-065x020/514	80, 100, 112 and 125	360 and 460	2		0.08

Accessories for Program 0360 and 0364

Round Cable Clamps



Technical details

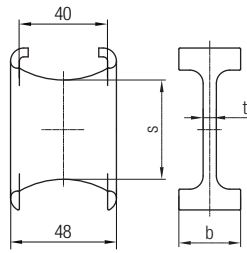
- Clamping: aluminum/rubber
- Guiding profile: aluminum
- Fasteners: stainless steel

Order No.	$\varnothing d_{max}$ [mm]	b_i [mm]	b_a [mm]	h [mm]	s [mm]	$\sum d^{1)}$ [mm]	Weight [kg]
031941-026x100/400	26	100	236	64	30	34	0.95
031941-026x150/400		150	286				1.07
031941-026x200/400		200	336				1.09
031941-026x250/400		250	386				1.31
031941-026x300/400		300	436				1.45
031941-026x350/400		350	486				1.57
031941-026x400/400		400	536				1.71
031941-026x450/400		450	586				1.83
031941-026x500/400		500	636				1.95
031941-026x550/400		550	686				2.07
031941-026x600/400		600	736				2.19
031941-026x650/400		650	786				2.33
031941-026x700/400	700	836	2.45				
<hr/>							
031941-036x100/400	36	100	256	74	40	46	1.04
031941-036x150/400		150	306				1.16
031941-036x200/400		200	356				1.28
031941-036x250/400		250	406				1.40
031941-036x300/400		300	456				1.54
031941-036x350/400		350	506				1.66
031941-036x400/400		400	556				1.80
031941-036x450/400		450	606				1.92
031941-036x500/400		500	656				2.04
031941-036x550/400		550	706				2.16
031941-036x600/400		600	756				2.28
031941-036x650/400		650	806				2.42
031941-036x700/400	700	856	2.54				
<hr/>							
031941-046x100/400	46	100	276	84	50	56	2.37
031941-046x150/400		150	326				2.49
031941-046x200/400		200	376				2.61
031941-046x250/400		250	426				2.73
031941-046x300/400		300	476				2.87
031941-046x350/400		350	526				2.99
031941-046x400/400		400	576				3.13
031941-046x450/400		450	626				3.25
031941-046x500/400		500	676				3.37
031941-046x550/400		550	726				3.50
031941-046x600/400		600	776				3.63
031941-046x650/400		650	826				3.75
031941-046x700/400	700	876	3.87				

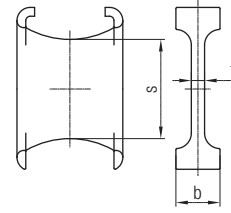
1) If the total of two adjacent cables ($d_1 + d_2$) is smaller than the value $\varnothing d$ of the table, spacers are required to separate the cables.
See page 29.

Accessories for Program 0350, 0360 and 0364

Spacers



Broad version



Small version

Order No.	s [mm]	t [mm]	b [mm]	Appropriate Cable Clamp	Material	Version	Weight [kg]
031946-26	25	4	18	031941-026x...	Plastic	Small	0.010
031946-36	35	5	19	031941-036x...			0.015
031946-46	45	6	20	031941-046x...			0.025
031947-26	25	4	26	031941-026x...	Plastic	Broad	0.015
031947-36	35	5	27	031941-036x...			0.020
031947-46	45	6	28	031941-046x...			0.025

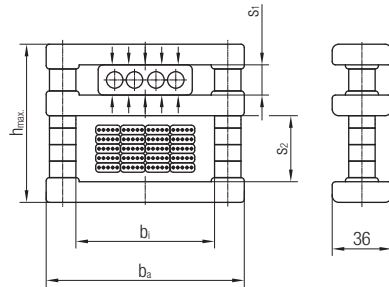
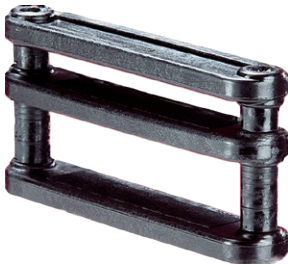
Notes

The above drawings are examples for illustration only.

Small version for cables with outer diameter smaller 14 mm and larger 22 mm.

Broad version for cables with outer diameter larger 14 mm and smaller 22 mm.

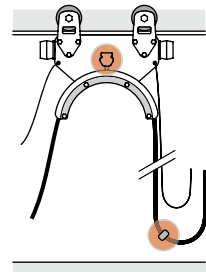
Flat Cable Clamps



Notes

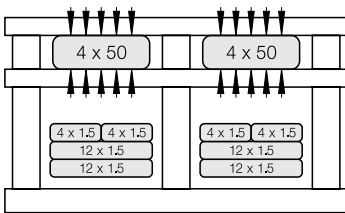
- By changing the distance tubes from window s_2 to window s_1 , the flat cable clamp can be adjusted to fit the cable package.
- The window with the dimension s_2 must be adjusted to an appropriate dimension, so that the cables can move with sufficient clearance (> 15 mm).

Order No.	b_1 [mm]	b_a [mm]	$s_1 + s_2$ [mm]		$s_{1min.}$ [mm]	$h_{max.}$ [mm]	Weight [kg]
031953-084x045/400	84	120	45	+2.5	5	80	0.18
031953-084x055/400			55			90	0.19
031953-084x065/400			65			100	0.21
031953-084x075/400			75			110	0.22
031953-084x085/400			85			120	0.23
031953-136x045/400	136	172	45	+2.5	5	80	0.24
031953-136x055/400			55			90	0.25
031953-136x065/400			65			100	0.27
031953-136x075/400			75			110	0.28
031953-136x085/400			85			120	0.29



Arrangement of flat cables within the cable clamp

Cable clamps maintain proper spacing of the cable package within the cable loop. The larger diameter power cables (e.g. 4 x 50) are clamped in the upper window; all other cables are guided in the lower windows and can move freely. The arrangement of the cable package must fit properly within the respective clamping window.

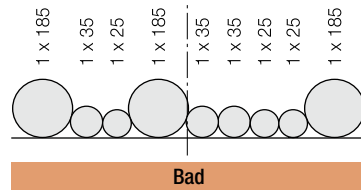
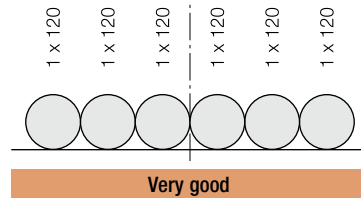


Clamping of shielded (screened) cables should be avoided.

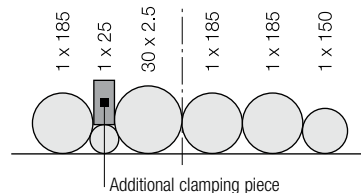


Arrangement of round cables on the cable support

The diameters of the round cables should not vary too much in order to allow proper clamping onto the cable support.



If deviations in diameters of adjacent cables are more than 15 mm use additional clamping pieces for a proper clamping.

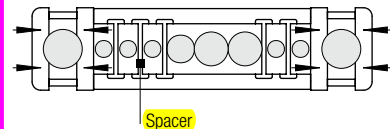


Arrangement of round cables within the cable clamp

Cable clamps maintain proper spacing of the cable package within the cable loop. The outer cables are clamped; all other cables are guided in the inner windows and can move freely.

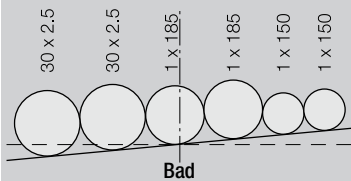
Unshielded power cables with larger copper cross sections should be favored for the outer cables (e.g. 1 x 120 or 4 x 25).

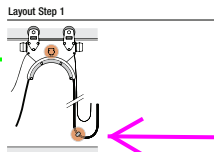
Additional spacers can be installed in the cable clamp to avoid overlapping of cables when there are large differences in diameter.



Applies for all cables:

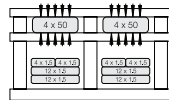
Make sure to balance the cable load on the cable support.





Arrangement of flat cables within the cable clamp

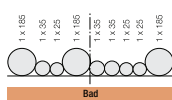
Cable clamps maintain proper spacing of the cable package within the cable loop. The larger diameter power cables (e.g. 4 x 50) are clamped in the upper window; all other cables are guided in the lower windows and can move freely. The arrangement of the cable package must fit properly within the respective clamping window.



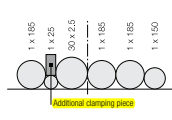
Clamping of shielded (screened) cables should be avoided.

Arrangement of round cables on the cable support

The diameters of the round cables should not vary too much in order to allow proper clamping onto the cable support.



If deviations in diameters of adjacent cables are more than 15 mm use additional clamping pieces for a proper clamping.

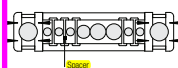


Arrangement of round cables within the cable clamp

Cable clamps maintain proper spacing of the cable package within the cable loop. The outer cables are clamped; all other cables are guided in the inner windows and can move freely.

Unshielded power cables with larger copper cross sections should be favored for the outer cables (e.g. 1 x 120 or 4 x 25).

Additional spacers can be installed in the cable clamp to avoid overlapping of cables when there are large differences in diameter.

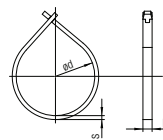


Applies for all cables: Make sure to balance the cable load on the cable support.



Accessories for Program 0350, 0360 and 0364

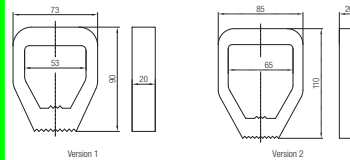
Cable Organizers for Cable Loops



Order No.	ed [mm]	b [mm]	S [mm]	Material	Fasteners	Weight [kg]
031942-0300x15	300	30	20	Rubber	-	0.59

Note: For cable loops > 4 m, the cable organizer in addition to the flat and round cable clamps prevents an expansion of the cables at the lower section of the cable loop.

Additional Clamping Pieces for Round Cable Clamps

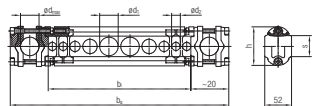


Note: Differences in diameter between adjacent cables of more than 15 mm require additional clamping pieces for a tight clamping.

Order No.	For Systems with Main Roller Diameter ed [mm]	Support diameter ed ₁ [mm]	Version	Material	Weight [kg]
031999-053x020/514	50 and 63	260 and 350	1	Rubber	0.06
031999-065x020/514	80, 100, 112 and 125	360 and 460	2		0.08

Accessories for Program 0360 and 0364

Round Cable Clamps



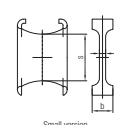
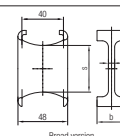
Technical details:
 • Clamping: aluminum/rubber
 • Guiding profile: aluminum
 • Fasteners: stainless steel

Order No.	ed _{max} [mm]	b ₁ [mm]	b ₂ [mm]	h [mm]	s [mm]	Σd ¹ [mm]	Weight [kg]
031941-026x100/400	26	100	236	64	30	34	0.95
031941-026x150/400		150	286				1.07
031941-026x200/400		200	336				1.09
031941-026x250/400		250	386				1.31
031941-026x300/400		300	436				1.45
031941-026x350/400		350	486				1.57
031941-026x400/400		400	536				1.71
031941-026x450/400		450	586				1.83
031941-026x500/400		500	636				1.95
031941-026x550/400		550	686				2.07
031941-026x600/400	600	736	2.19				
031941-026x650/400	650	786	2.33				
031941-026x700/400	700	836	2.45				
031941-036x100/400	36	100	256	74	40	46	1.04
031941-036x150/400		150	306				1.16
031941-036x200/400		200	356				1.28
031941-036x250/400		250	406				1.40
031941-036x300/400		300	456				1.54
031941-036x350/400		350	506				1.66
031941-036x400/400		400	556				1.80
031941-036x450/400		450	606				1.92
031941-036x500/400		500	656				2.04
031941-036x550/400		550	706				2.16
031941-036x600/400	600	756	2.28				
031941-036x650/400	650	806	2.42				
031941-036x700/400	700	856	2.54				
031941-046x100/400	46	100	276	84	50	56	2.37
031941-046x150/400		150	326				2.49
031941-046x200/400		200	376				2.61
031941-046x250/400		250	426				2.73
031941-046x300/400		300	476				2.87
031941-046x350/400		350	526				2.99
031941-046x400/400		400	576				3.13
031941-046x450/400		450	626				3.25
031941-046x500/400		500	676				3.37
031941-046x550/400		550	726				3.50
031941-046x600/400	600	776	3.63				
031941-046x650/400	650	826	3.75				
031941-046x700/400	700	876	3.87				

1) If the total of two adjacent cables (e₁ + e₂) is smaller than the value ed of the table, spacers are required to separate the cables. See page 29.

Accessories for Program 0350, 0360 and 0364

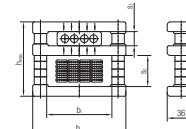
Spacers



Order No.	s [mm]	t [mm]	b [mm]	Appropriate Cable Clamp	Material	Version	Weight [kg]
031946-26	25	4	19	031941-026x...	Plastic	Small	0.010
031946-36	35	5	19	031941-036x...			0.015
031946-46	45	6	20	031941-046x...			0.025
031947-26	25	4	26	031941-026x...	Plastic	Broad	0.015
031947-36	35	5	27	031941-036x...			0.020
031947-46	45	6	28	031941-046x...			0.025

Notes:
 The above drawings are examples for illustration only.
 Small version for cables with outer diameter smaller 14 mm and larger 22 mm.
 Broad version for cables with outer diameter larger 14 mm and smaller 22 mm.

Flat Cable Clamps



Notes:
 • By changing the distance tubes from window s₁ to window s₂, the flat cable clamp can be adjusted to fit the cable package.
 • The window with the dimension s₂ must be adjusted to an appropriate dimension, so that the cables can move with sufficient clearance (> 15 mm).

Order No.	b [mm]	b ₁ [mm]	s ₁ + s ₂ [mm]	S _{max} [mm]	h _{max} [mm]	Weight [kg]	
031953-084x045/400	84	120	45	+2.5	5	80	0.18
031953-084x055/400			55			90	0.19
031953-084x065/400			65			100	0.21
031953-084x075/400			75			110	0.22
031953-084x085/400			85			120	0.23
031953-136x045/400	136	172	45	+2.5	5	80	0.24
031953-136x055/400			55			90	0.25
031953-136x065/400			65			100	0.27
031953-136x075/400			75			110	0.28
031953-136x085/400			85			120	0.29